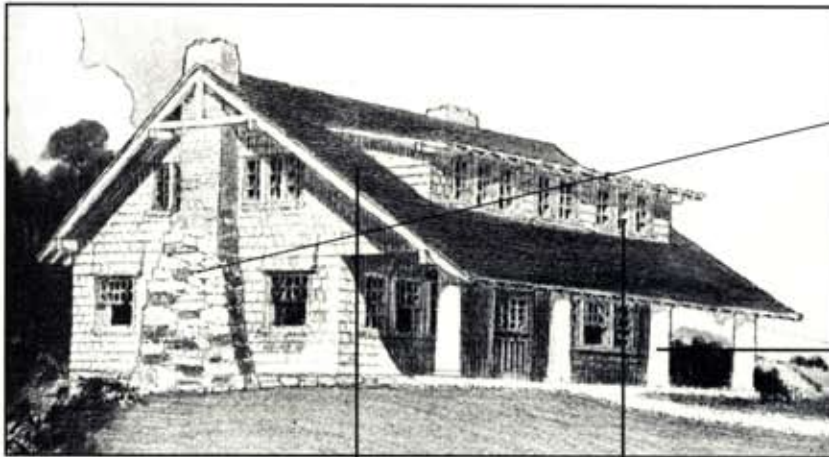


Craftsman Houses

What to look for in your "Craftsman Home Hunt"

Illustrated are just three of the over 200 Craftsman homes that appeared in *The Craftsman* magazine in the period 1904-1916. They represent Gustav Stickley's "mature period" of home design, and most houses that can be found exhibit a combination of the features illustrated here. If you think you've found a true Craftsman house, knock on the door; people love to find out things about their homes. A quick look inside should tell you if you've made a discovery. If you find one, please contact Ray Stubblebine at 201-599-2966, or write and send a snapshot to 863 Midland Rd., Oradell, NJ 07649. Good hunting!



Chimney: often a mix of materials, stone at bottom becoming brick towards top.

Columns: if wood, almost always round and plain. Stone columns rare and usually square.

Published in *The Craftsman*, November 1909

SEVEN-ROOM SHINGLED COTTAGE: NO. 78

Roof: extremely large, overhanging eaves with rafters exposed and usually cut at an angle at the end. Support beams extend out beyond the ends of the rafters. Triangle type supports rarely used. Tile and slate as well as natural cedar shingles favored; other materials, such as "Rubberoid," probably long since fallen into disrepair and replaced.

Windows: usually grouped, either double hung or casement. Look for small casement windows on either side of chimney that indicate an inglenook.

Exterior walls: ground floor and upper floors often of different materials (e.g., clapboard or shingle over stone, or shingle over clapboard) and area under roof may have vertical tongue-and-groove boards cut at bottom like a saw tooth. Texture and colors of natural materials emphasized. Use your imagination to see beneath that new aluminum siding!



Published in *The Craftsman*, March 1910.

SEVEN-ROOM CEMENT HOUSE: NO. 85

Sleeping and dining porches: open or screened-in "sleeping porches" off one or more bedrooms common. Often later enclosed for extra rooms. An inset open porch often designed off dining room or kitchen for summertime open air dining.



Published in *The Craftsman*, July 1909

TEN-ROOM HOUSE OF BOARDS AND SHINGLES: NO. 70

Pergola: attached pergolas original to house often removed or enclosed. Sometimes room; additions built over them.